

CROWN

MAKE THE MOST OF YOUR CONNECTIONS

InfoLink®



Link Equipment, People and Processes

The InfoLink® Operator and Fleet Management System is all about connections—linking lift trucks, users, operations and service. Tackle your greatest challenges surrounding productivity, safety, uptime, equipment usage and more. In the words of a customer, “Where we can’t be, InfoLink is.”



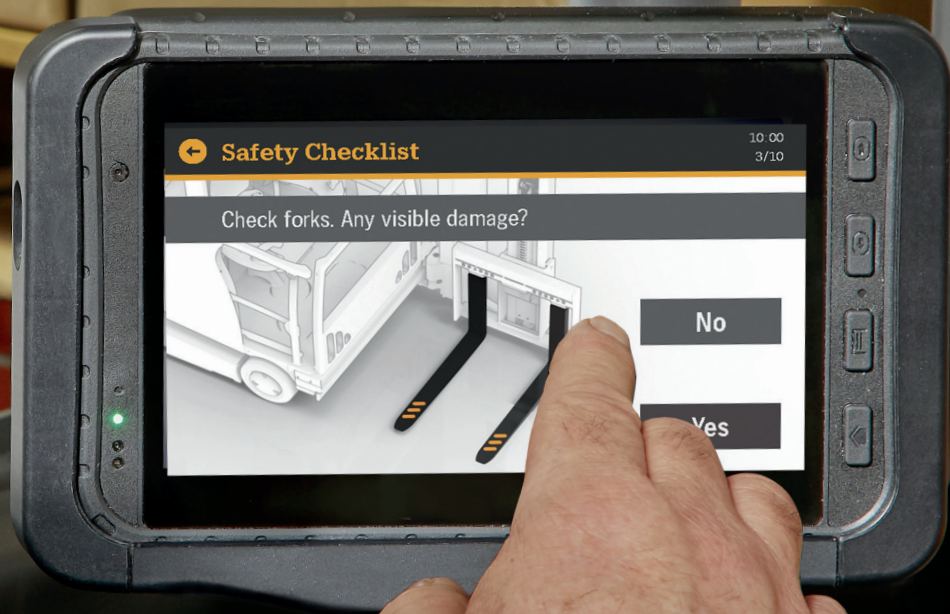
Connect to Information that Matters

The InfoLink system opens a world of data that matters most:

- Promote and manage safety
- Uncover hidden risk
- Find cost savings
- Reinforce training
- Empower operators and managers
- Accelerate improvement

It's time to make the most of your connections.





The InfoLink 7" Touch Display combines durable construction with intuitive touchscreen design for ease of use in your industrial application.

For applications that require operators to wear gloves, the InfoLink 7" Touch Display includes button navigation.



Regulatory penalties up to
\$13K
per violation

Built on Crown's tradition of human-centered forklift design, InfoLink reinforces an experience-first approach that inspires and motivates safe operating behavior.

Additionally, InfoLink takes you deeper with interactive data that keeps everyone informed. As one facility manager explained: "It provided data that I can't measure with a time card."



Access control, an automatic part of the login process, requires up-to-date operator certification for lift truck access.



Electronic operator daily **checklist** required for access helps ensure that the truck is safe to operate.

25+ languages

improve productivity in a diverse workforce.

Unleash the Power of People

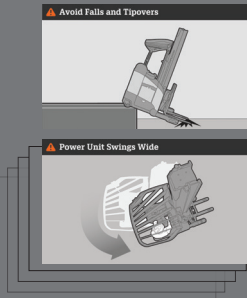
On-screen **safety reminders** at

login help to reinforce operator training.



Impact monitoring

encourages timely operator coaching and reduces damage to lift trucks, facility and products.



Dynamic Coaching™

Delivers real time visual and audible safety alerts that reinforce operator behaviors based on truck operation.



40%
of new hires leave in the 1st year

InfoLink reveals best practices and areas of risk to help with targeted improvements for new and existing operators.



The Crown Advantage

The InfoLink system and your forklift fleet are key components of your operation. Crown's expansive retail network is ready to help define and guide your InfoLink system implementation.

To maximize uptime, InfoLink field technicians, backed by dedicated factory support, provide prompt and efficient on-site installation and system optimization.

Get Inspired to Move Ahead

InfoLink provides a rich source of definitive data to help solve operational challenges.

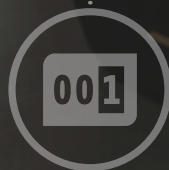


Trend analysis shows when your lift trucks are being used, helping you quantify value and make informed decisions on whether to rent or buy.



Uptime improvements can be attained with InfoLink:

- Schedules planned maintenance
- Encourages proper battery care practices
- Captures event codes when service is required
- Utilizes checklist feedback to identify repairs early



Performance improvements identified through continuous monitoring and reporting provide immediate opportunities for operator feedback and training.



Fleet utilization information can help you right-size your fleet by monitoring truck availability based on lift, lower, transport and idle times.

Seasonal usage is easily recognized in customizable reports and graphs to help you plan for peak demand.

Make your Connection



7" Touch Display



3" Display

SAFETY	Complete electronic pre-shift inspections, manage operator certifications and monitor impacts	●	●
PRODUCTIVITY	Compare operator or team activity to department/shift benchmarks, identify long-term and seasonal trends	●	●
UPTIME	Schedule planned maintenance and communicate maintenance issues	●	●
ASSET MANAGEMENT	Manage individual lift truck assets or entire fleet across multiple locations	●	●
COST REDUCTION	Prevent expensive repairs, reduce damage from impacts and avoid regulatory penalties	●	●
TOUCH USER INTERFACE WITH WIDGETS		●	
SAFETY REMINDERS AND CHECKLIST IMAGES		●	
DYNAMIC COACHING CAPABLE		●	

InfoLink Services: Achieve More With Your Connection

Crown's InfoLink Services can help provide the additional support needed to ensure your success. Supplemental services include those designed to help you create a solid foundation, data integration assistance with other platforms and additional customizations as you continue your InfoLink journey.

- Prepare your team for the InfoLink system with the **RightStart™** program that tailors the implementation process to meet your operational needs.
- Re-energize your organization with InfoLink using the **JumpStart™** program by assessing your company's current state of InfoLink usage and customizing a plan to boost engagement.
- Integrate InfoLink data into your business systems through **InfoLink Data Services**.
 - KPI Connect – time clock, WMS, LMS
 - Maintenance Connect – hour meter data
 - Human Resource Connect – employee and certification data
 - **FleetSTATS®** – fleet maintenance management system
- Optimize your InfoLink experience with Custom Reporting that provides the analytics you need in a format and frequency that fits your business.

We make it easy to leverage Crown's extensive fleet management expertise by utilizing our InfoLink Services.

Contact your local Crown retailer today for an on-site business review and make the most of your connections.



Visit crown.com

ecologic[™]

Clean Environment. Smart Business.
Printed on elemental chlorine free and
sustainably forested paper.

CROWN

You can count on Crown to build lift trucks designed for safe operation, but that's only part of the safety equation. Crown encourages safe operating practices through ongoing operator training, safety-focused supervision, maintenance and a safe working environment. Go to crown.com and view our safety section to learn more.

Crown Equipment Corporation
New Bremen, Ohio 45869 USA
Tel 419-629-2311
Fax 419-629-3796
crown.com

Because Crown is continually improving its products, specifications are subject to change without notice.

Crown, the Crown logo, the color beige, the Momentum Mark, InfoLink, Dynamic Coaching, RightStart, JumpStart, FleetSTATS and the ecologic logo are trademarks of Crown Equipment Corporation.

Copyright 2019 Crown Equipment Corporation
SF18422 Rev. 06-19
Printed in U.S.A.